

**JULY 2025**

All members and friends are cordially  
invited to attend our

## **ANNUAL GENERAL MEETING**

**On Wednesday 23 July 2025**

at

**St Barnabas Church Hall**

**Fendalton Rd**

**Light refreshments commence at 5.30pm**

**Followed by the AGM at 6pm**

**Guest Speaker: Mark Walton**



A highly respected musician, composer, and educator from Christchurch, now based in Sydney Australia. Mark is widely recognised for his contributions to music education and community music-making through his initiative, Outreach Music. As well as his musical credentials Mark is an engaging public speaker, and also well known for his “Our Kiwi Home” column published in the Press regularly, which focuses on local social history and heritage amongst other topics.

## From the Chair



Kia Ora, greetings all and welcome to July. It never ceases to surprise me how quickly the year is sprinting by.

Our second newsletter of the year is a progress report in so far as many of the issues that have been high on the trust priority list since the last newsletter are still bubbling away.

The trust board has been busy keeping an eye on these issues affecting Christchurch.

Daresbury House is one such. The Trust has been pursuing ways to prevent the threatened destruction of this landmark building, which as you will be aware has had its heritage listing rescinded in a vote by city councillors. A vote that The Trust believes was made on unverified evidence to council and the Trust has pursued with the Minister of RMA Reform, Chris Bishop.

Unfortunately, the Minister has simply deferred his decisions until council can clarify zoning matters. Since then, surprisingly, a PC13 IHP Hearing was held over two days in June to hear further evidence including Daresbury. We query the purpose of this new hearing, particularly since we are awaiting a decision by the Minister on the council's alternative recommendation.

In more positive news, printing of the new, revised edition of our City and Peninsula book is now complete and will be available for purchase through selected retailers and from our website [www.christchurchcivictrust.org.nz](http://www.christchurchcivictrust.org.nz) (See paragraph later in the newsletter)

It's been a while in the making but considering the complexity and need for high production values of the book it's been worth the wait. Thanks to Canterbury Print (CanPrint) for delivering excellent quality print job and not forgetting the author John

Wilson for his revision pages which fit seamlessly into the book. Also, a huge thanks to The Heritage Team at the Christchurch City Council who gifted us the Heritage Fund Grant to fund the reprint. It was the last such grant to be gifted by the Team, as the Council has cut Heritage funding in the new City Plan. So, we were very lucky.

In other good news - The Trust would like to congratulate Diana Shand, who was appointed a Member of the New Zealand Order of Merit (MNZM) in the 2025 King's Birthday Honours recently for her services to the environment and the community. Diana has played a significant role in environmental governance and advocacy, helping shape sustainable resource management policies that directly impacted the Christchurch region. Well done, Diana.

A Constitution Subcommittee consisting of myself, Board member Erin Oakley and Treasurer Lindsay Carswell have undertaken the task of revising and bringing up to date CCT's Constitution. It is a work in progress, and we are not obligated under the guidance of MBIE to do a revision if we don't want to, but because we haven't had an update since 7<sup>th</sup> May 2009, we felt for our own purposes, it's long overdue for another one.

Our Annual General Meeting is coming up on the 23<sup>rd</sup> of this month (**See the notice about this on the first page of the newsletter**).

Our Guest Speaker is Mark Walton, a highly respected musician, composer, and educator from Christchurch, now based in Sydney Australia. He is widely recognised for his contributions to music education and community music making through his initiative, Outreach Music. As well as his music credentials Mark is also an engaging speaker and, well known for his "Our Kiwi Home" column published in the Press regularly, which focuses on local social history and heritage amongst other topics. Thanks Mark, we look forward to hearing from you.

That's probably enough from me. As always, when we learn about issues, events and activities, we will continue to keep you all advised throughout the year in upcoming newsletters.

Take care, Nga Mihi and stay warm everyone.

**Hamish Gilchrist**



### **Trees in Jeopardy:**

This is a recent article from St Albans News (STAN) reproduced with the editor's approval.

STAN is the local St Albans newspaper, delivered to all residents in the suburb and covers all things relating to the area, trees being a recent major concern.

**EMMETT STREET TREES FELLED.  
WHAT'S NEXT?**

Residents in tree-lined St Albans Streets are waiting to learn the timetable of council consultation following the removal of 22 mature oaks in Emmett Street.

St Albans News has sought a timetable for future maintenance of the local trees, but was unable to obtain information from the council by print deadline.

Fortunately a majority of the large canopy trees lining Emmett Street have been retained with judicious pruning to avoid electricity wires. Similar pruning or removal is anticipated for other tree-lined streets such as Malvern and Severn Streets and Francis Avenue.

The controversial removal of the Emmett Street trees distressed many residents and highlighted the city council policy on trees.

## **CIVIC TRUST AWARDS**

**2025**

Members are invited to nominate recent outstanding heritage and environmental projects to be considered for an award later this year by the Civic Trust.

**Nominations close on**

**30 September**

Please send your nominations to:

[secretary@christchurchcivictrust.org.nz](mailto:secretary@christchurchcivictrust.org.nz)

A link to the awards page on our website

<https://christchurchcivictrust.org.nz/christchurch-civic-trust-awards/>

The 2025 Awards evening will be on

25th November at the St Barnabas

Church Hall Fendalton Rd

**Save this Date**

In 2023 the council approved a plan to lift the residential tree canopy cover to 20% by 2070 and street tree canopy from 8% to 15%.

(Abridged)

**Sandra Shaw**

## **Update on PACE Internship with Christchurch Civic Trust**

Student, Poppy Selby-Page, is set to commence her internship with The Christchurch Civic Trust in the University of Canterbury PACE (Professional and Community Engagement) program involving 70 hours starting from 14/07/2025. Completion is to be achieved before the 17/10/2025. The Civic Trust's team of advisors are Chris Kissling, Anne Dingwall, and Lynette Hardie Wills.

Poppy will explore space(s) suitable for holding large scale public events with a view to relieving pressure on Hagley Park. The designated zone in North Hagley Park is too confined to accommodate very large crowds. These events are profitable. Christchurch wishes to accommodate them.

There are many factors to consider. Transport access and vehicle parking is critical. Noise containment and light spill have to be considered. Whether or not sound-shells should be permanent and therefore available at short notice, how crowd control is implemented, what might be the economic return to the city and how is that calculated? How to ensure the venue is left in good condition following any event?

Poppy will hone her interviewing skills and learn to distinguish between facts and fancy in the process.

The link to the complete article:  
[:https://share.google/cpQmuq9mYK668hoaB](https://share.google/cpQmuq9mYK668hoaB)

**Report by Chris Kissling**

## **City and Peninsula Book Reprinted**

Christchurch Civic Trust are happy to announce a third print of our City and Peninsula book, and the first revised edition since 2011.

**The previous second edition which has now sold out, was printed in 2011 but did not take into account the devastating 2011 earthquakes.**

This third edition has been bought up-to-date by the author, John Wilson. He has kindly included a revised page at the front of the book with listings under:

- **Buildings Lost on Banks Peninsula**
- **Buildings Lost in Lyttelton**
- **Buildings Lost in Christchurch**
- **Partial losses**
- **Buildings with Uncertain Future**

We would like to thank him for his work on this. Christchurch City Council Heritage Team kindly granted us the money to do the reprint for which we are very grateful. The retail price of the book is higher with this new printing as I'm sure all will understand the amount of time since the last edition (fourteen years).

**The retail price is \$50 - \$55.**

**The book is available from our stockists, as listed in the advertisement on the back page**

**Also available at:**

[www.christchurchcivictrust.org.nz](http://www.christchurchcivictrust.org.nz)

# Christchurch Heritage

## Antigua Boatsheds

The iconic green and white boat sheds. Historic Place, Category One.

Situated on the left bank of the Avon River.

Constructed in 1882, they are a quintessentially English component of Christchurch. The boat sheds and boating are closely linked to boating in England,



especially in Oxford and Cambridge, and was seen as an acceptable thing for a young woman to enjoy. They are probably the last remaining example of nineteenth century boat sheds which continue to be used for the same purpose for which they were

originally built - the recreational pleasure of boating on the Avon.



There has been relatively minor changes over the years, with a deck added in the 1970's and in 2006 the boat sheds were repiled and strengthened. In 2010 the then owners Mike and Sally Jones received a Civic Trust award for their care of the boatsheds over many years.

In recent months, the boat sheds have been re-roofed and re-painted with the help from a grant from Heritage New Zealand- their National Heritage Preservation Incentive Fund.

**Sandra Shaw**



**Antigua Boatsheds**



## McLean's Mansion

As you are aware, the Christchurch Civic Trust has had a long relationship with McLean's Mansion, with many of the board and members serving on the McLean's Mansion fund raising committee, and

Although there has been much discussion in the media, about James Wallace's involvement, the mansion is actually owned by the McLean's Mansion Charitable Trust.

Certainly Wallace has put a significant amount of money into the renovation, and he is Chairman of the Trust, so has



**Aerial View of the exterior of McLean's Mansion**

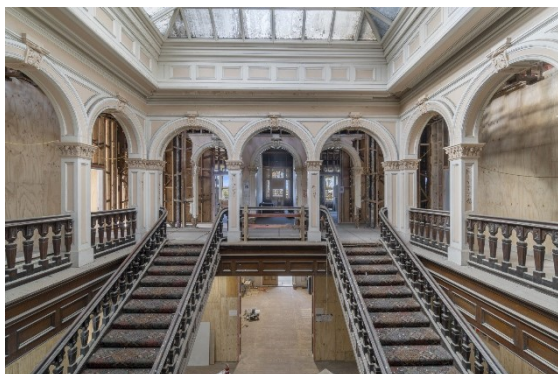
supporting various fundraising initiatives over the years since the Christchurch Earthquakes badly damaged it.

considerable control over the decisions regarding the mansion's future.

Putting the mansion on the market will hopefully attract potential buyers/partners, that will enable the restoration to be completed.

It stands proudly as a unique heritage building, saved from vandals and post-earthquake demolition, that we should all be very proud of.

<https://www.oneroof.co.nz/news/significant-amount-of-buyer-interest-in-disgraced-rich-listers-mansion-47667>



**McLean's Mansion interior**

It is with much interest, that we are following the sale process of this much loved historic building.

**Erin Oakley**



## Visit to Brookfield House

On a sunny Saturday morning, April 5th, twenty-five Board and members of Christchurch Civic Trust gathered at Brookfield House 82 Bealey Avenue.

Vincent Holloway, one of the owners and directors of Brookfield Developments spoke from the porch about the character features, pointing out the various additions and alterations over the years. The exterior has been recently repainted in heritage colours. We were then able to explore the interior of this large and impressive example of a wealthy merchant's town house, built in 1861.

I discovered to my surprise, that the original Marseille tile roof is still there although painted dark grey sometime in the past.

I

The garden has been extensively redesigned and planted by Board member, Robert Watson, who has returned it to its original historic look, with large trees replanted in the front.

It was an enjoyable visit, and a peep into the past.

We would like to thank Vinnie Holloway for his kindness in inviting our group to visit his workplace, and giving us a talk on their special house, and allowing free access to explore. It was much appreciated.

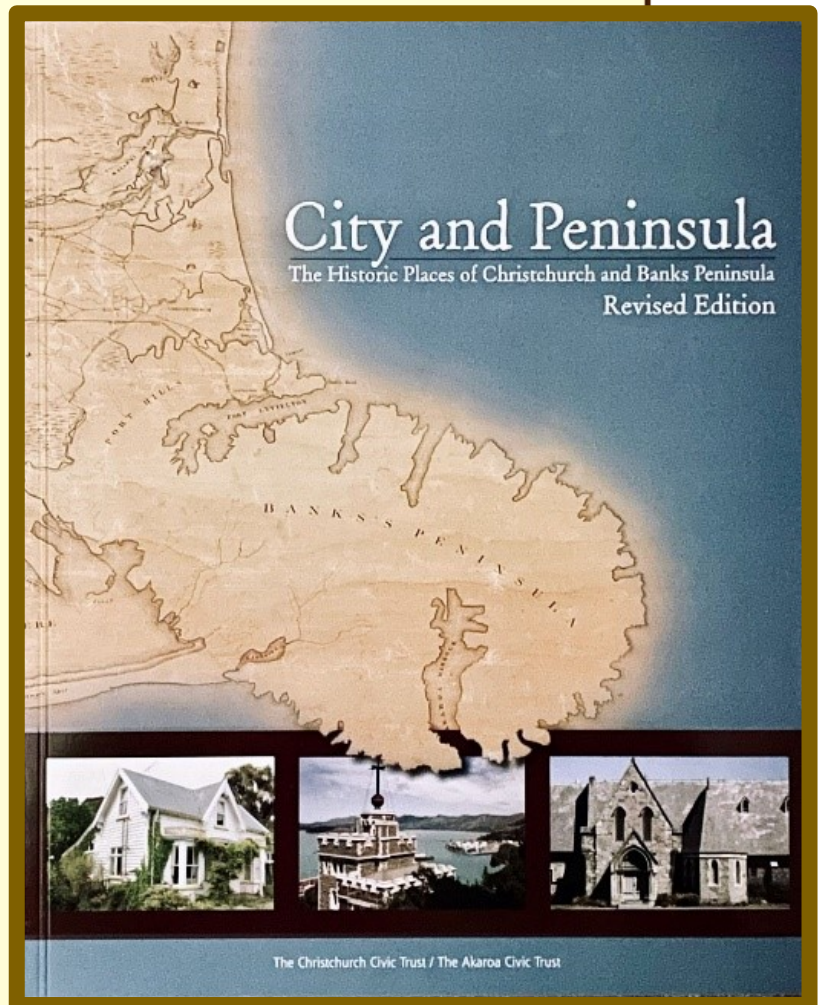
**Sandra Shaw**



**Civic Trust members during their visit to Brookfield House**



# City and Peninsula



**The retail price is \$50 - \$55**

**The book is available from our stockists:**

**Scorpio Books, BNZ Centre.**

**Smith's Bookshop, The Tannery**

**The Arts Centre Shop, Arts Centre**

**Leslie's Bookshop, Lyttelton**

**Piccadilly Bookshop, Avonhead Mall**

**Quake City 299 Durham St**

**University Bookshop, University of Canterbury**

**Also available at: [www.christchurchcivictrust.org.nz](http://www.christchurchcivictrust.org.nz)**