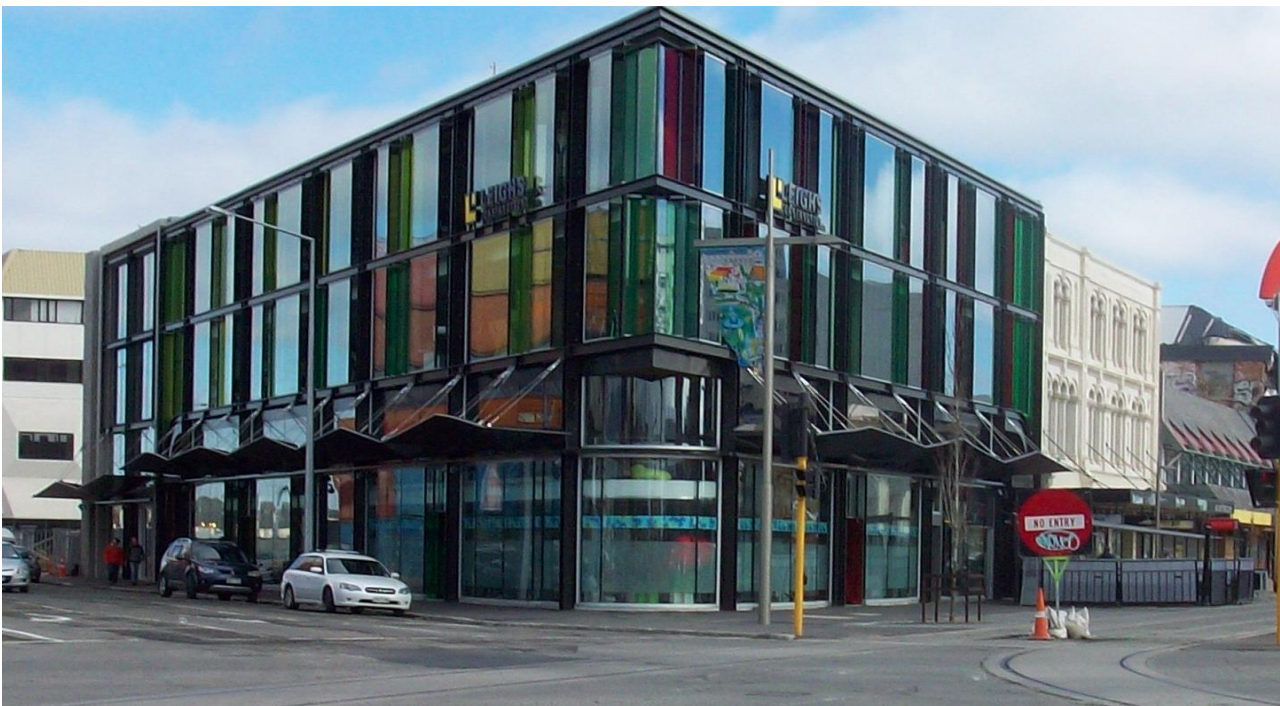




Newsletter

OCTOBER 2014

CIVIC TRUST AWARDS 2014



Supreme Award Strange's Building Cnr High and Lichfield Sts

The Christchurch Civic Trust presented its first annual award in 1977 and in the years since, a total of no fewer than 249 awards have been given to worthy projects, both built and environmental. Among those acknowledged by the Trust in the past have been many owners of heritage buildings that no longer exist. With the decline in the number of major character heritage structures in the City, the Trust's awards emphasis in the years to come will likely shift. We are now entering an era where there will be an unprecedented number of contemporary building designs receiving awards and commendations.

This year a total of 11 nominations were received by the awards sub-committee, from which 7 awards (including 1 supreme award) and 4 commendations have been given. Awards have been made in all four categories of the awards criteria. With such a strong emphasis on renewal and sustaining aspects of Christchurch's built and natural environs emerging, the Trust sees the need to support groups whose endeavours are working toward achieving a better future for Christchurch in the years ahead. The awards sub-committee are: Vivien Bishop, Lynn Campbell, Joanna Mackenzie, Penny Orme and Neil Roberts (Convenor)

Category A

A project that has made a material and beneficial change to the City environment, involving either development on a new site or re-development of an existing site or structure.

SUPREME AWARD

Strange's Building

Citation: The Christchurch Civic Trust recognises excellence of building design that also acknowledges the original character of a major corner site and gives consideration to inner city urban revitalisation

Strange & Company began in High St in 1863 and, by 1901 had grown to become the largest department store in New Zealand. In 1899 the company built a large 4 storey Italianate style building designed by W.A.Armson, on the corner of High and Lichfield Sts that survived for decades



The former Strange & Co building

long after Strange & Co's sudden demise in the early 1930s.

In 2010 the distinctive Category 1 building was purchased by the KPI Rothschild Property Group Ltd, which had plans for renovating and restoring the building. Unfortunately the 2010 and 2011 earthquakes caused damage beyond repair and demolition followed soon after.

The KPI Rothschild Property Group Ltd are to be congratulated for their vision in redeveloping this

historic building site. While construction utilizes 21st century design in terms of its structure and the use of materials, it also makes strong and meaningful references to its architectural past. Like the former building by Armson, the design by Jasper van der Lingen also strongly acknowledges the corner siting. This can be observed in the subtle expression on the exterior facades, where the former buildings string-lines have been clearly defined and relate well to adjacent, previously earthquake-strengthened historic buildings.

The distinctive internal lane-ways have restored much of the original building footprint and enabled both a linkage with the earthquake- strengthened Bonnington building on High St and a skillful merging of old materials with new.

This building is the first to be completed in the inner city's former earthquake Red-Zone. KPI Rothschild Property Group bravely commenced construction before the area was opened up and have set an inspired model for future new building developments in the city. The combination of 21st century materials and construction methods with an historic environment is innovative and already younger citizens are indicating their appreciation of the beginning of a new city aesthetic.

Presentation of the
Christchurch Civic Trust

AWARDS 2014

Members are invited to attend the
Christchurch Civic Trust annual awards
to be held in the Browne Room at the
Canterbury Horticultural Centre

57 Riccarton Avenue

Wednesday 15 October

Commencing at 5.30pm

AWARD

Jonathan Smart Gallery

52 Buchan St Sydenham

Citation: The Christchurch Civic Trust recognises the initiative and enterprise in retaining and adapting a former commercial building for an arts-cultural retail use, and the contribution made to the revitalization of Sydenham.



Jonathan Smart Gallery 52 Buchan St Sydenham

Jonathan Smart lost his original High St gallery in the February 2011 earthquake. In 2013 he moved to 52 Buchan St Sydenham and transformed what had been an automotive garage into an art gallery. When Jonathan opened his new gallery it was a significant step forward for the visual arts in Christchurch. After the major Christchurch earthquakes there was a paucity of exhibiting space available for local, national and international artists. As the Jonathan Smart gallery represented the work of many leading contemporary New Zealand artists in Christchurch the opening of this gallery space was a welcome addition. The Jonathan Smart Gallery is now in a permanent new home thereby showing a serious commitment to the revitalisation of the arts and culture in Christchurch. This former industrial space has been transformed into a gallery of simple yet graceful proportions that gives Sydenham another string to its growing cosmopolitan bow. The Buchan St gallery emphasises the vital role that dealer galleries play in the re-establishment of the arts in Christchurch. The activities of galleries such as these enable the arts sector to move forward on a

cultural front as part of the continuing rebuild of the city.

AWARD

262 Tuam St

Citation: The Christchurch Civic Trust recognises the quality of design of a building that contributes to the streetscape and revitalisation of an inner city urban environment.



Standish & Preece Building 262 Tuam St

The photography firm of Standish and Preece is now the oldest in New Zealand. Established by the artist Frank Berry Standish (1860 -1944) and Alfred Ernest Lyttelton Preece (1863-1946) in 1885, their studio has continued to be well known throughout New Zealand. In 1987, Standish & Preece was purchased by the photographer, John Hunter who, until recently, ran the business at 262 Tuam St, in what was a rather unprepossessing, mid-twentieth century, utilitarian commercial building. Following the 2011 earthquake and the subsequent demolition of this building, the owners, John and Sarah Hunter, decided to put back on the site something better than had been there before. What has been achieved is a design that not only echoes something of the building character that

AWARDS AND COMMENDATIONS 2014

once graced the inner city, but one that also stands as an example of what is possible within the scope of renewal. The building makes a marked contribution to the streetscape identity in this part of Christchurch. It conveys thoughtful references, while presenting an attractive modern design. Designed by Pivot Building and Design and constructed by Hobbs Builders, the building was conceived to incorporate a café restaurant, a photographer's studio, and living accommodation on the first floor.

AWARD

134 Victoria St

Citation: The Christchurch Civic Trust recognises the innovation of design and construction of this building and its contribution to the redevelopment of the Victoria St streetscape.



134 Victoria St

This very contemporary structure, designed by Jasper van der Lingen of Sheppard and Rout, is innovative in the utilization of new and experimental materials and technology which have been developed by Andy Buchanan, Professor of Engineering at the University of Canterbury. The building design makes use of laminated timber beams which are strong, flexible and earthquake-resilient, and demonstrates how this material can be successfully utilized in large constructions such as 134 Victoria St, which is used for both office and retail activities. It is a fine example of a developer and architect demonstrating strong, pioneering thinking in their solutions, in terms of contemporary challenges that are presented in the

creation of sturdy buildings that can cope with any challenge seismic movement may cause to structures built on a significant scale. As such, it provides an inspiration in terms of what New Zealand design and technology can offer as a solution to building construction in earthquake-prone regions and, in doing so, is presenting a specific New Zealand response that is also internationally relevant.

Category B

A project that has restored, upgraded or protected a site, building or group of buildings of significant heritage character or conservation value.

AWARD

Hello Sunday Cafe and Pascha

Spiritual Centre Sydenham

Citation: The Christchurch Civic Trust recognizes the initiative and enterprise in retaining and adapting two buildings of heritage character for hospitality and a personal well-being centre and the contribution made to the revitalisation of Sydenham.



Hello Sunday Café and Pascha Spiritual Centre

In 1882, the Sydenham Baptist Church had a chapel built facing Bowen St (Elgin St since 1904) by the building firm of Smith & Croft. Constructed in wood with a shingle roof, at a cost of £400, the chapel was designed to seat around 300 parishioners.

In 1921, the Sydenham Baptist congregation decided that it was no longer suitable for its needs and, 3 years later, leased it to the Seventh Day Adventist Church. This church continued to use the chapel until 1971, after which it had other occupants until it was purchased in 1982 by Lloyd and Terry Park and altered for use as a commercial photographer's studio. After Lloyd Park's death in 2001, the chapel and its adjacent schoolroom were used, until last year, by either photographers or designers



Sydenham Baptist Church c 1890

The chapel has now been carefully restored on its site at 6 Elgin Street by Jonathan Spark and Yasmeen Clark. On an upper floor, a false ceiling was removed to reveal the original kauri trusses and the kauri tongue-and-groove ceiling of what has now been transformed into a large meeting space for the Pascha Spiritual Centre. Downstairs has become a retail area and teaching rooms.

In partnership with café owner-manager, Chris Penny, the next-door, old Sunday School building, which was moved onto its site in about 1924, has also been restored, retaining a sense of its history.

Thought originally to have been an early 1870s Post Office and one of the twelve oldest buildings remaining in Christchurch, it is now revitalised as the café 'Hello Sunday'.

Both buildings, once again, serve as lively meeting places for a variety of functions, creating a positive community centre within their local Sydenham area.

COMMENDATION

285 Ferry Rd Phillipstown

“Chaos” and “Collections”

Citation: The Christchurch Civic Trust commends the initiative and commitment in revitalising and adapting a character domestic building on a major Christchurch thoroughfare for complementary commercial use.

“Chaos” and “Collections” have been established antique businesses for many years. “Collections” specialises in small domestic, personal and decorative antique items and “Chaos” deals with larger antiques, some of which, such as bookcases, an industrial clock or even a railway carriage, require restoration. In 2009, to accommodate their different needs, the owners were delighted to purchase a large 1906 commercial Hurst Seagar building at 180 Tuam Street. The building had formerly been occupied by a builders' merchant, Fuller Brothers'



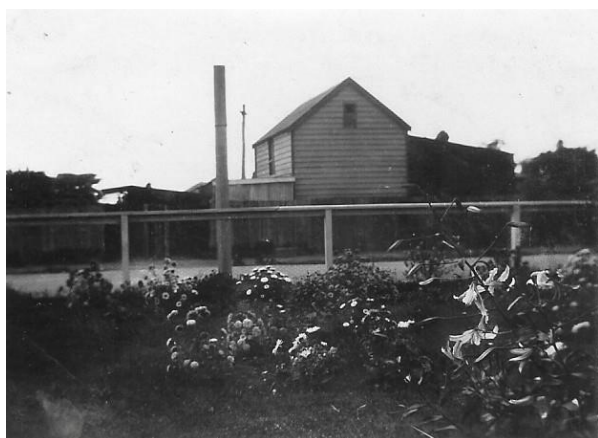
“Chaos” and “Collections” 285 Ferry Rd

a printing business and the “Blue Kiwi” antique shop. This historic building was ideal for their needs as it included a small intimate space for “Collections” displays, a large space for the sales and restoration required by “Chaos” and a stylish apartment upstairs where the owners could live. Subtle improvements were made and the building survived the 4th September, 2010 earthquake, only to be destroyed in the earthquake of February 22nd, 2011. Architectural plans were soon drawn up for a replacement building on the site, but the owners were later devastated to find that not only had they lost their historic building, their land was to be

taken from them under the new Earthquake City Plan. It was a great challenge to find another suitable property and eventually they settled on 285 Ferry Road, despite its advanced state of disrepair.

The Ferry Road property has had several owners in its history. In 1904 it was owned by Raun Nicolai Jacobsen, a boot maker, and from 1910 – 1940, Henry Benjamin Rogers a coal merchant and carrier owned the corner of Olliviers and Ferry Road.

From 1942 – 1954 it was known as Rogers Bros. Coal Merchants and the house at 285 was the Rogers' family home for more than forty years. In 1955 the corner of the property on Olliviers Road became a car dealer's yard and remains so today.



Rogers' Coal Merchants Cnr Olliviers & Ferry Rds

The house has now become home to “Collections” after extensive renovations, including the addition of French doors and a veranda rescued from a property due for demolition. “Chaos” has made use of a neglected workshop in a large space at the back of the house. It is entered via a rebuilt veranda and antique curved glass shop windows rescued from the old “Halls” the Herbalist premises in Armagh St. 285 Ferry Road is a fine example of a forgotten and neglected property being brought to life after many unforeseen set backs.

Category C

Engineering, environmental, transport and other infrastructure projects that enhance city functions in efficient, cost effective, safe and environmentally friendly way.

AWARD

Christchurch Botanic Gardens

Visitor Centre

Citation: The Christchurch Civic Trust recognises the construction of an environmentally focused education facility that efficiently enhances the public enjoyment of the Christchurch Botanic Gardens.



Christchurch Botanic Gardens Visitor Centre

The Christchurch Botanic Gardens Visitor Centre is the first civic project completed since 2011. At a cost of \$16.4 million, it was officially opened in April of this year.

Initially proposed in 2004, and approved by the Christchurch City Council in 2009, the Centre was conceived to be celebratory acknowledgement of the Christchurch Botanic Gardens sesquicentennial

For decades the Gardens had functioned with facilities inadequate not only for operations, but also for engagement with the public. The new, visually striking glass and steel building has rectified this most successfully. Its design, by Patterson Associates, takes its inspiration from traditional botanic

garden architecture of the nineteenth century. The visitor centre is intended to foster botanic science, research and education. Built by Leigh construction, it is a multi-purpose facility that incorporates an exhibition space, gift shop, café/function room, reference library, herbarium, working nursery and potting sheds as well as staff amenities.

Category D

Special events and programmes that (i),serve to raise the community's awareness and appreciation of its heritage assets and or (ii),promote a sustainable environment of the city's physical attributes.

AWARD

The Warren Trust

Citation: The Christchurch Civic Trust recognises the initiative and enterprise in establishing a trust that contributes to the promotion and public awareness of the art of architecture.



65 Cambridge Tce

The Warren Trust was formed in 2006 by Sir Miles Warren, ostensibly to provide the opportunity for the promotion of architectural knowledge. Prime objectives of the Trust are to provide education for professional New Zealand architects and build public awareness of the art of architecture through exhibitions, debate, courses in architecture and an annual public lecture. In addition the Trust has made the former offices of Warren & Mahoney, at 65 Architects. The building is also the home of the Trust Cambridge Terrace available for the use of Canterbury members of the New Zealand Institute of Architects and there are plans to establish and develop an architectural library in the building.

Since its inception in 2006, The Warren Trust has given support grants to many architectural education initiatives, including lectures by visiting international speakers, several architectural exhibitions, the publication of architectural monographs, New Zealand architects' master classes and the production of a documentary film.

COMMENDATION

Avon-Ōtākaro Network

Citation: The Christchurch Civic Trust commends the vision and community driven enterprise in promoting a sustainable, ecological and recreational reserve environment for the remediation of former red-zone land bounded by the Avon River.

The Avon- Ōtākaro network of organisations and individuals has a vision to create a reserve and river park in the Avon River residential red zone, while promoting the future use of the Ōtākaro/Avon River and the surrounding red zone lands as an ecological and recreational environment for the community.

It aims to establish a community-driven, science-informed, living memorial to rejuvenate and nurture the long-term environmental, economic, community and spiritual wellbeing of the eastern suburbs and greater Christchurch, as well as creating a place of hope and inspiration for the people of Christchurch by restoring health and vitality to our river and its lands.

The Avon-Otakaro Network convenes public forums on such relevant topics as "What's with the Water in our Rivers?", conducts community surveys and facilitates public involvement in events such as the first stage of Greening the Red zone with the Matariki planting day, for which four hundred native plants were donated by the Department of Conservation, a school community garden was established and a fruit tree grove was planted out in Anzac Drive Reserve, East Burwood. These types of events are also aimed at encouraging children to participate in the process of local sustainability.

The network is a key partner within the Eastern Vision group, supporting discussion of ideas for a city-to-sea river park, an eco-sanctuary, a flatwater

sports lake, a heritage garden park, a wave garden and aquatic and community educational centres for the Eastern suburbs.

The AvON Facebook page provides a forum for discussion and alerts local communities about activities, concerns or discoveries, such as trees to be saved or birds which have been spotted. It illustrates, with updated photographs, the transformation of the landscape of the Avon - Ōtākaro area.

COMMENDATION

Sustainable Otautahi Christchurch

Citation: The Christchurch Civic Trust commends the initiative of Sustainable Otautahi Christchurch for promoting public awareness of the need for a sustainable city environment to support healthy communities within Otautahi/Christchurch.

Sustainable Otautahi (SOC) recognises the relationship of our city to its environs and the people of Otautahi/Christchurch.

Through education and charitable activities, members encourage communities to practice live and demonstrate sustainability in all that they do.

SOC members work to ensure that all people have their basic needs satisfied, so that they can live in dignity, in healthy communities, while having the minimum adverse impact on natural systems, both now and in the future.

The primary objectives of SOC are to facilitate and promote education about the ethics and practice of sustainability in the community, and to encourage education about sustainability by the promotion of innovative planning and design of urban developments and projects. A wide range of associations support the Sustainable Otautahi Vision through practical, advocational and educational involvement, such as Engineers for Social Responsibility, WEA, Avon Otakaro Network, Waitangi Otautahi, Project, Lyttelton and St. Albans Residents' Associations, Christchurch Community House and others.

Among its many valuable social initiatives, SOC has established a group called 'Transition Communities' which aims to stimulate the formation of localised, participatory, 'transition' initiatives within and around Christchurch communities, moving from where we are now to where we wish to be in the future. The SOC network offers information, practical experience and connections with others who are heading in similar directions. They also work to promote, conduct and publish research as part of a programme to educate communities about a whole-systems approach to sustainability.

COMMENDATION

The Ministry of Awesome

Citation: The Christchurch Civic Trust commends the initiative in providing an open platform to promote positive creative ideas that raise public awareness of the potential for revitalisation and sustainable urban recovery in Christchurch.

The Ministry of Awesome is a post-earthquake initiative aimed at encouraging inspirational innovation in the City's recovery. It has gained a lively response, particularly from the young citizens of Christchurch.

The organization of the Ministry of Awesome has quite a formal structure, including five trustees, two employees, internships and many volunteers. Funding to support its activities comes from the Christchurch City Council, Kiwibank and the Canterbury Community Trust.

The Ministry of Awesome engages with the public through regular events. These include the lunchtime "Coffee and Jam" sessions, held weekly at the EPIC building, which is an open public forum. The aim is to stimulate entrepreneurial and innovative initiative. There is also a monthly Awesome evening event, which is held at various locations, with the objective of showcasing various projects that have a community focus. The opportunity for anyone to participate in advising and supporting discussions is also available.

AWARDS AND COMMENDATIONS 2014

AWARDS AND COMMENDATIONS 2014

AWARDS AND COMMENDATIONS 2014