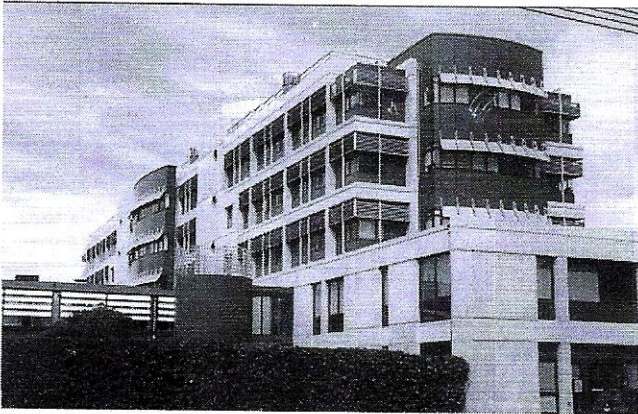


Christchurch Civic Trust Awards 1998

Group A - Award New Block, School of Engineering, University of Canterbury



Owner/Developer: University of Canterbury
Architect: Sheppard & Rout

This is a consistently well designed building that integrates well with the other multi-storey buildings on the campus.

Group B - Awards

Davidson House, 263 Cambridge Terrace



Owner/Developer: Cancer Society, New Zealand,
Canterbury-West Coast Division
Architect: Wilkie and Bruce

Davidson House was built by the Cancer Society with funds raised by people and organisations from throughout the South Island. It provides accommodation for out-of-town cancer patients. It is a well designed building and, with its neighbours, it has created a pleasing and interesting section of streetscape.

The Excelsior Hotel, High and Manchester Streets

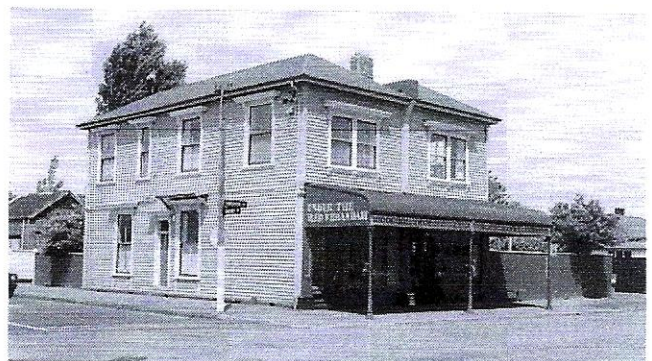


Owner/Developer: Christchurch Heritage Trust.
Conservation Architect: George Lucking

Since 1865 there has been a hotel on this site. In 1881 William B Armson, a prominent Christchurch architect of the period, designed the present hotel in the classical style that he favoured. The Christchurch Heritage Trust's sympathetic restoration and refurbishment of this important heritage hotel not only ensures the maintenance of the tradition of a hotel on this site, but also that the present building retains its rightful place with the other heritage buildings on this important street junction. The new appropriate colour scheme of the exterior encourages a fresh appreciation of the classical design character of the building.

Group B - Commendation

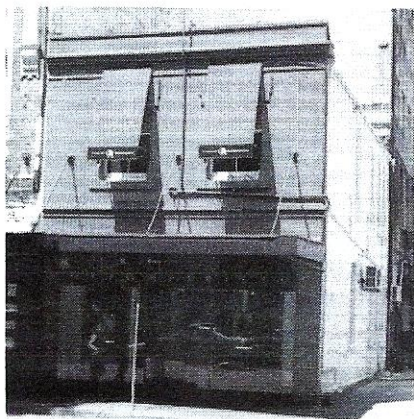
'Under the Red Verandah' Cafe, Worcester St, Linwood.



A pleasant cafe just outside the central city. The conversion of a former corner store to a popular cafe

has been done with sympathy and respect for the character of the building. It is a positive contribution to the social ambience of the area.

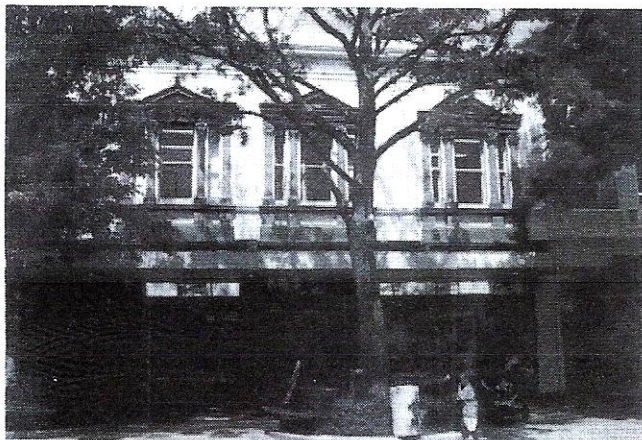
**Colley & Robinson Building,
126 Hereford Street.**



Owner: Colley & Robinson
Architect: Charles Allison, Stuart Paterson & Partner

This building is a link in the history of Hereford Street. The strengthening and retention of the building is a credit to the firm which has occupied the premises for many years. Competent and imaginative renovation allows the building to sit proudly among its taller neighbours.

**Canterbury Sports Depot Building,
High Street Mall.**



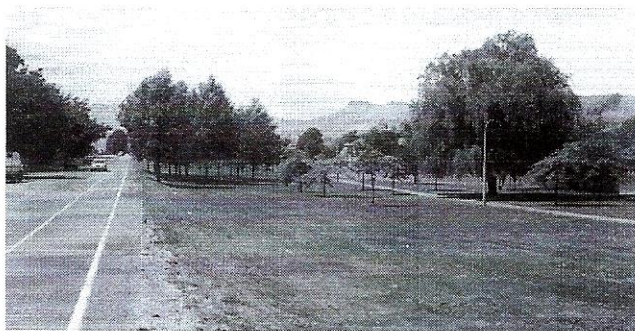
Owner: Amtrust Pacific Ltd, Auckland.
Architects: Wilkie & Bruce.

When rebuilding took place on this site the original upper storey was retained, thus preserving a link with the historical styles in High Street. Competent renovation of the shop fronts and imaginative painting of the upper storey make a positive contribution to this part of High Street Mall.

Group C - Award

**Brougham Street Expressway
Landscaping (Wilsons Rd to Garlands Rd)**

Christchurch City Council and Transit New Zealand.
The City Council is responsible for the planting of the



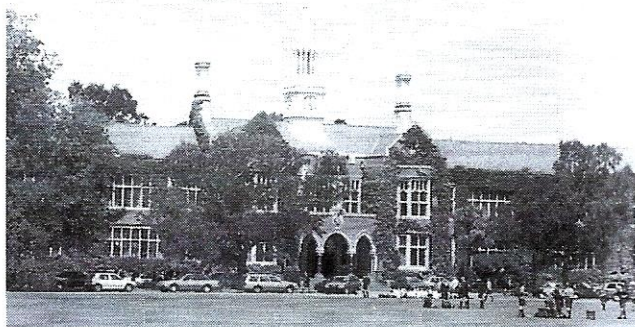
trees and shrubs and for the maintenance of them. The skilful, yet essentially simple, landscaping makes a significant contribution not only to the experience of driving on this section of the expressway, but also to the locality in general.

Group D

**Award Sponsorship of Christchurch
Heritage Week.**

Hoyts NZ Cinema Ltd Christchurch Heritage Week is a major event of considerable significance to heritage awareness and appreciation by the wider community. We commend Hoyts for its valuable contribution to this important event.

**Special Award Christchurch Boy's
High School**



Restorative Architect: Hall & McKenzie
Architects: J.S. & M.J. Guthrie

This award to the Christchurch High School Old Boy's Association and various other sponsors, is for accomplishing the preservation of the original building on Straven Road which was opened in 1926.

The sympathetic structural strengthening has ensured the future of the building which is notable for its architectural qualities, its setting and its historical place in the provision of education in Canterbury.

With the benefit of hindsight, we can see that this project marked an important change in attitude toward the retention of heritage educational buildings. Since 1989 we have seen Hagley High School and Avonside Girls' High School refurbished and continuing their function as educational buildings - following the example set by Christchurch Boy's High School.

Purpose and Categories of Awards

The Christchurch Civic Trust is concerned with improving and regenerating the quality of environment of the City of Christchurch and its surrounding area; and with promoting a greater environmental awareness within the community. The Trust focuses attention each year on these principles by a system of annual Awards and Commendations. It is first of all a vote of congratulations to the recipients in that they receive confirmation that their work and risk and enterprise have been noted by others as being beneficial also to the whole city. And the attention brought to their good example, in this way, may also have the power to influence the view of the general public or the City Council in similar directions. The Awards and Commendations are made, as merited, in each of four groups, and are for projects recently completed in situations accessible - and therefore influential - to the public, within the area of greater Christchurch. Unlike other award systems which may be quite specific - such as the New Zealand Institute of Architects awards for 'Excellence' in a particular building, the awards of the Civic Trust are more generalised and chosen to illustrate principles that are seen as beneficial, for example, to the whole City environment. Sometimes the awards or commendations are given to acknowledge quite ordinary or modest solutions which nevertheless may ignite or encourage particular tendencies.

GROUP A

Group A is for a new building or major alteration, notable for its location, which by its appearance - respects and/or enhances the character of its surroundings, thus contributing in a positive way to regenerating that part of the City, and so by its example will positively influence future changes.

GROUP B

A restored building or a new structure that because of the initiative and effort shown in the construction deserves to be brought to the public's attention as an example of how a building can significantly enhance the character of the locality.

GROUP C

Group C is for landscaping projects, engineering works, and other schemes or improvements that make a significant contribution to the environment of the locality.

GROUP D

Group D recognises special events that serve to raise the community's awareness and appreciation of its heritage and environment.

Commendations are made as congratulations for implementing principles and for making positive contributions to the streetscape, that merit public recognition.

All Members and friends of the Civic Trust
are cordially invited to attend our
*Awards & Commendations presentations
and End-of-Year function*

Wednesday 9 December 1998

**To be held in the
Hurst Seager Room, Christchurch Arts Centre
Cnr Rolleston Ave & Hereford St**

The meeting will commence at 5.30 p.m.

Bring a friend

Light refreshments provided

Annual Report 1997-1998

Once again matters relating to the Review of the District Planning Scheme have dominated the year. When we glibly made over 200 submissions some years ago, I'm afraid we little thought of the subsequent activity these would require. Floods of Council officers' reports on the submissions keep arriving. These have to be read and the comments on the Trust's submissions noted. If our submissions are supported by the report, as they often are, we tend to take no further action hoping that the hearing panel will support the planning officers' views of our submission. If the planning officer rejects them, then we may appear at the hearing. But all this, especially the reading, takes much time.

So far the reports have reached a metre in height and they are still coming.

The Trust, once again, was involved in Heritage Week, our contribution being a lecture by the late John Huggins entitled "The City Within the Four Avenues - Have we erected a sustainable working city?"

Although John was unwell, he gave his usual stimulating and amusing lecture illustrated, as always, with brilliant slides. This was to be the last occasion in which John appeared in public as he died on Thursday 27 November. His wise counsel, enthusiasm and energy have been sadly missed by the Trust Board and the many hundreds of people whose lives he touched.

He was always willing to take on a job of work and, in recent years, was a mainstay of the Civic Trust Awards. Like Sir Christopher Wren, his memorials are all about us in the form of new houses or additions - always done with flair and inspiration. My wife and I are privileged to have some of his work in our home.

This past year has seen a spate of requests by Phantom Outdoor Advertising Ltd to erect hoardings on many city buildings, including some listed historic buildings. The Trust has opposed some of these as it is felt such hoardings, in many cases, cheapen the environment and are usually not supported by the community.

Some Environment Court appeals are pending.

The Trust has put in considerable effort in relation to the preservation of the old Nurses' Home - now Hagley Hostel - after Adrienne Boniface raised the issue in November. Jennifer Barrer followed this up and I gave submissions at the City Council hearing and later at the Maori Affairs select committee hearing our concerns. These are expressed in the article in the current newsletter.

Jennifer Barrer has also been involved in issues relating to a microwave tower facility on Cashmere Hills adjoining the residential area. Many people in the city, including whole schools, have raised similar concerns only to be told there is no proof of adverse health effects.

But I am reminded of the scientific trumpeting that accompanied the development of nuclear power stations. We were then told there was absolutely no risk and those in opposition we branded as "nutters".

Now we know better. Will the future show that, likewise, microwave towers are dangerous?

Some may wonder why the Civic Trust should be involved. The answer is that anything - be it poorly designed buildings, removal of trees, inappropriate subdivision of land, destruction of heritage buildings, hoardings - anything that detracts from the pleasant and healthy environment of our city comes within our sphere of interest and action.

It is pleasing to note the progress on the refurbishment of Cathedral Square to a plan very similar to that drawn up by Civic Trust members seven years ago. Peter and Jocelyn Beaven, David Thornley, John Davies, John Huggins and I were all involved.

This plan was presented, along with the City Council's proposal, to a packed public meeting in the Limes Room when our scheme was unanimously approved much to the chagrin of the council staff. However we believe the Trust, along with the powerful lobbying of the Cathedral Square Committee led by Mr Hugh Wyles, was responsible for some considerable rethinking on the part of the Council.

In relation to the retention of heritage buildings, two significant events have occurred in the past year. The Christchurch Heritage Trust completed the purchase of the Excelsior Hotel and the City Council purchased the Coachman. It is hoped this process will continue. Indeed the Civic Trust with the Historic Places Trust is currently involved in efforts to save the Church of the Good Shepherd in Phillipstown - one of Benjamin Mountford's brick churches.

At our February meeting, Mr Hugh Wyles spoke about the proposed roading reform and suggested if it was carried out as proposed, Christchurch roads and their users would likely be adversely affected. The Trust lodged a submission, but one wonders whether it is always worth the effort: in this case, however, it was because some changes have been made - we wait to see the end result with some interest.

The Trust was actively involved in the proposal to build a series of high rise apartments on Park Terrace, and we wrote to the Council expressing concern that the application for a resource consent was not going to be publicly notified. Since then I believe foundation problems have held up the proposal.

On Tuesday 10th March, the Hon. Nick Smith was present at a meeting called to discuss changes to New Zealand's Heritage management. Several Board members attended a very useful meeting and we subsequently made submissions.

Our May meeting was privileged to hear Councillor Denis O'Rourke speaking of "Buses in the Square". He is a strong advocate of a bus interchange area adjacent to the Square - preferably in the area of the John Britten development behind the Press building.

This is a matter on which we will need to do further work if Christchurch is to have an appropriate and efficient public transport system.

The final submission made by the Trust related to the McShane Report on the Resource Management Act. This huge report, designed to be provocative but with an underlying privatising philosophy would have needed weeks of work to fully cover in a submission. In the event our secretary, Doug Saunders, put in a submission with the blessing of the Trust and I did likewise in both cases covering only those aspects which impinged on the Trust's concerns.

At the last meeting, the Trust has agreed to make another submission, but this will follow the annual meeting. It relates to the Regional Council Draft National Resources Regional Plan - Part Air. A small subcommittee is handling this. It has truly been the year of the submission!

As always the Civic Trust Awards have been an important activity during the year and those responsible are thanked - especially Val Heinz.

How successful and effective has the year been? This is difficult to judge as we do not always know whether our submissions have been favourably received. On the other hand, it is not always direct results that are important. We do have an influence in many spheres, one of the most significant being the growing awareness of heritage values.

The Trust has always been in the forefront in the struggle to save heritage buildings - the Arts Centre, the Normal School and the old Government Building to name but the most obvious - when such actions were considered by many to be a waste of time and effort.

It is pleasing now to experience a change in society's attitude, exemplified best perhaps by the recent formation of the Christchurch Heritage Trust. Much

more needs to be done in this sphere, but at least the climate of opinion seems propitious.

Trust Board members deserve special mention this year. Marette Taylor received a Civic Award for her community work, especially her involvement with the Port Hills Park Trust Board, where she has been chairman for a number of years.

Also David Thornley has been in the headlines as the designer of zero emission electric buses for Sydney and Christchurch.

The Civic Trust has representatives on a number of community organisations as follows: -

Port Hills Park Trust Board : Marette Taylor (Chairman).

Nurses' Memorial Chapel: Valerie Heinz.

Christchurch Heritage Trust Advisory Committee: David Thornley.

Arts Centre Trust Board: Ian Clark.

Heritage Trust: Ian Clark.

The Trust Board, once again, wishes to express its appreciation and thanks to Mr Rit for generously providing us with a meeting room.

I would also pay tribute to all Board members for their dedication and work throughout the year and especially to Prue Wignall (Treasurer) and Doug Saunders (Secretary). They both carry a substantial load of work and the Trust depends on them to a very great extent.

We have always enjoyed good relations with the City Council, though not of course always being in agreement. We believe however that we are both working for the benefit of our city.

Finally, our thanks go to the media which plays an important role in any enlightened community.

Ian G. Clark, *Chairman.*

Membership 1998-99

Board Members 1998-99

Bruce Alexander, *Minute Secretary*, 332 3277

Joe Ashworth

Jennifer Barrer

Jocelyn Beaven

Adrienne Bonniface

Ian Clark, *Chairman, rep Arts Centre & Heritage Trust*
351 9928

Peter Dyhrberg

Ronald Fussell, *Vice-chairman*, 358-2772

Ross Grey

Eric Harris

Valerie Heinz, *rep - Nurses' Chapel*

Doug Saunders, *Secretary*, 332 4984

Jane Tyler-Gordon

Marette Taylor, *rep - Port Hills & Mona Vale*

David Thornley, *rep - Christchurch Heritage Trust Advisory Committee*

Prue Wignall, *Treasurer*, 385 8292

Hugh Wyles

Corporate Members

We acknowledge the kind support received from the following business houses: -

Messrs Boffa Miskell, The Caxton Press,
Mackintosh Bradley & Price, Miles Toyota Ilam,
Morgan and Pollard, PDL Holdings, Southpower.

Friends of the Trust

G. Rogers, D. Beaven

We gratefully acknowledge the continuing support of Mr Rit Arunrugstichai (Civic of Canterbury).

New Members

Mrs T McLean, Jacqueline and Don Smith, Rhys Taylor.

Port Hills Millennium Projects

Turning Point 2000 has been initiated and core funded by the Christchurch City Council. The purpose of the project is to plan and co-ordinate a programme of events and projects for the Year 2000, including Canterbury's Sesqui Centennial Celebrations (150th anniversary).

Action/Advisory Groups of volunteers are being established to develop events and projects which will foster closer community relationships and leave a durable legacy for future generations. A very wide field of interests is covered including art, heritage, gardens/horticulture, performing arts, science and technology, sport, youth, runanga, tree planting, New Years Eve and regional interests throughout Canterbury.

One of these committees is Port Hills 2000 on which the Civic Trust has a representative. This committee has selected three major areas as being feasible and worthy of attention.

- * Godley Heads Farm Park.
- * Castle Rock and Tors Reserves.
- * Whaka Raupo Reserve.

Godley Heads Farm Park

Situated between Taylors Mistake and the entrance to Lyttelton Harbour, Godley Heads was a military defence station during the war years and has subsequently been a Department of Conservation Farm Park. The area has become a recreation area for people using its popular walking tracks.

A special feature of this area is a small, but growing penguin colony. For this to become successful in the long term, a fence needs to be erected around the colony to protect the penguins from predators.

The committee is studying the feasibility of such a project. It must also determine the most suitable location for a fence as well as its structure. Some controlled access for the public to view the colony and revegetation are also being considered.

Castle Rock Reserve and the adjacent Tors Reserve

Castle Rock Reserve is on the spur between Horotane and Heathcote valleys. Its boundaries run along near the top of the Horotane side of the spur. From there, it extends down to the plantings above the approach road to the Lyttelton Road Tunnel and from the bottom of the spur to the Summit Road. Above the Lyttelton

Tunnel, the reserve follows the Bridle Path.

The Tors Reserve is a continuation of this area above the Summit Road.

The objective here will be to begin restoration of indigenous plants into the area. Fencing, gates, seating and a path network are also to be included in the plan.

Some 49,000 plants will be needed for planting in these reserves over the next four years.

Whaka Raupo Reserve

This reserve starts at the Summit Road and runs west from the Bridle Path on the Lyttelton side of the hill. It extends to about 300 metres of the Tors Reserve at its closest point on the Summit Road. Its lower boundary is 600 metres below the summit of the Bridle Path and, at its south-western extreme, it is only about 300 metres above Cass Bay.

This area includes some dramatic rock outcrops and a remnant stand of indigenous vegetation. It is proposed to add a further 32,000 indigenous plants into the area.

Crater Rim Native Forest

A forest development linking Sugar Loaf and Cass Peak is being considered.

All these areas have significant recreation possibilities as well as providing a viable habitat for native birds that may be reintroduced. These projects will require the support of the people and businesses of Canterbury. Significant money, materials, labour and plants will be required over the next few years to realise these plans.

The Civic Trust can take some credit for the increased public awareness of the value of the Port Hills to Christchurch and Canterbury. The long campaign to raise funds for Mt Vernon Park marked a turning point in public attitudes. The support that came from the community was as good as a referendum supporting the cause. Now, ten years later, Mt Vernon Park is moving forward in a satisfactory and encouraging manner. The Park is being managed effectively by a Trust Board and management committee. These very capable citizens give of their valuable time and energy in the interests of the community - a labour of love.

It is hoped that many more willing workers will, by following their sterling example, take these new opportunities for community development. What a wonderful legacy we can leave for future generations.

R L Fussell

Mt Vernon Park

Mt Vernon Park was proud to become part of the Hoyt's Heritage Week celebrations (17 - 23 October). We were blessed with the weather and, considering all the activities in the region over the weekend of 17-18 October, we had a steady stream of visitors for the Open Day.

After ten years it was a great opportunity to remind the public of the origins of Mt Vernon Park and to highlight our special features. It was very encouraging to have the support of some of the original fundraisers and donors, it was good to hear from them.

A donation from the Civic Trust helped offset some of our Heritage Week promotional expenses which was much appreciated.

Our Port Hills 2000 Millenium project of a track for the disabled is in urgent need of financial support. If you know of some business or organisation which would care to sponsor some part of our project, such as a seat, we would be delighted to hear from you.

We would like to thank those who have already given. Remember we are a Charitable Trust for tax purposes. For further information phone me at 332 2797 or post donations to The Chairman, Port Hills Park Trust, P O Box 12-033 Christchurch.

Off the Record

A debate was recently held to mark the 100th anniversary of the death of B W Mountford, renown for his prolific work as architect in the Canterbury province.

How is it that our present-day 'leader' of architecture in this city distrusts these glories? The Provincial Chambers overdone? Work shoddy! Imagine the circumstances and the boldness required to erect such a splendid and optimistic group of towers while all around was swamp, grasses and a meandering, diminutive, weed-filled Avon River.

No doubt while standing on an immense flat plain, the courage and inspiration may well have been helped by the two splendid natural environments, the Port Hills to the south-east and the towering, snow covered Southern Alps stretching along the entire western horizon.

Personally, I cannot think of an architectural experience in New Zealand that is more enduring or more endearing than the experience of walking through the cloisters of the Provincial Council Chambers; its superb sense of the intimate scale and the relationship

between all materials used. The cool, large, hard, smooth, geometric flagstones from Halswell Quarry; the soft, porous, pink stone of the Peninsula and the resonant, dark, dark stain of the native timbers used throughout the entire ceiling rafters and wall panelling.

How can architecture be dismissed which stands totally timeless while breathing truly of the past - the past from where so many had so recently arrived. Mountford in 1855, was already being described by Henry Sewell in his recently published diaries as 'the architect of Canterbury'.

A style is a style, it may be argued forever, but there is no real argument between classical and gothic. They may be compared and one may be preferred above the other, but the best of both belong to the same story.

Anon

Hoardings and Heritage

Hoardings in heritage areas or in the inner city amount to visual pollution and are totally unacceptable. The city is gradually maturing to where single or small groups of historic buildings are viewed from within the perspective of their historical past while recognised for the inherent riches which they add to the city by their continued presence.

Hoardings, which apparently pay very handsomely, are not part of such buildings and do not act as recompense for the fact of being 'saved'. Rather hoardings act as a negation by diminishing meaning and challenging integrity.

To see the outline of the fixings for two large hoardings about to be erected at the highest points on the old Railway Station and clocktower (an Historic Places Trust listed building) is to view the first moments of their visual demise. This tall stern brick building in Moorhouse Avenue, when seen from Colombo Street overbridge, is the only landmark in view with the exception of the more distant splendid copper domes of the Roman Catholic Cathedral. Once the hoardings are in place this building will disappear and join the rest of 'disneyland' strewn around its feet.

Footnote: - The task of appealing against such hoardings has become an endurance test, seemingly endless. Even if submissions are successful, the applicant may appeal again and the whole performance repeated. This continual process is unsatisfactory and demands enormous amount of time and energy. Is it feasible for the Christchurch Heritage Trust, Civic Trust, and Historic Places Trust to unite and prevail upon the Christchurch City Council to exclude hoardings within the inner city area and heritage precincts.

Jocelyn Beaven.

THE CHRISTCHURCH CIVIC TRUST INC.
P.O. Box 1927, Christchurch, New Zealand

The views expressed in this publication are not necessarily those of the Christchurch Civic Trust Inc.